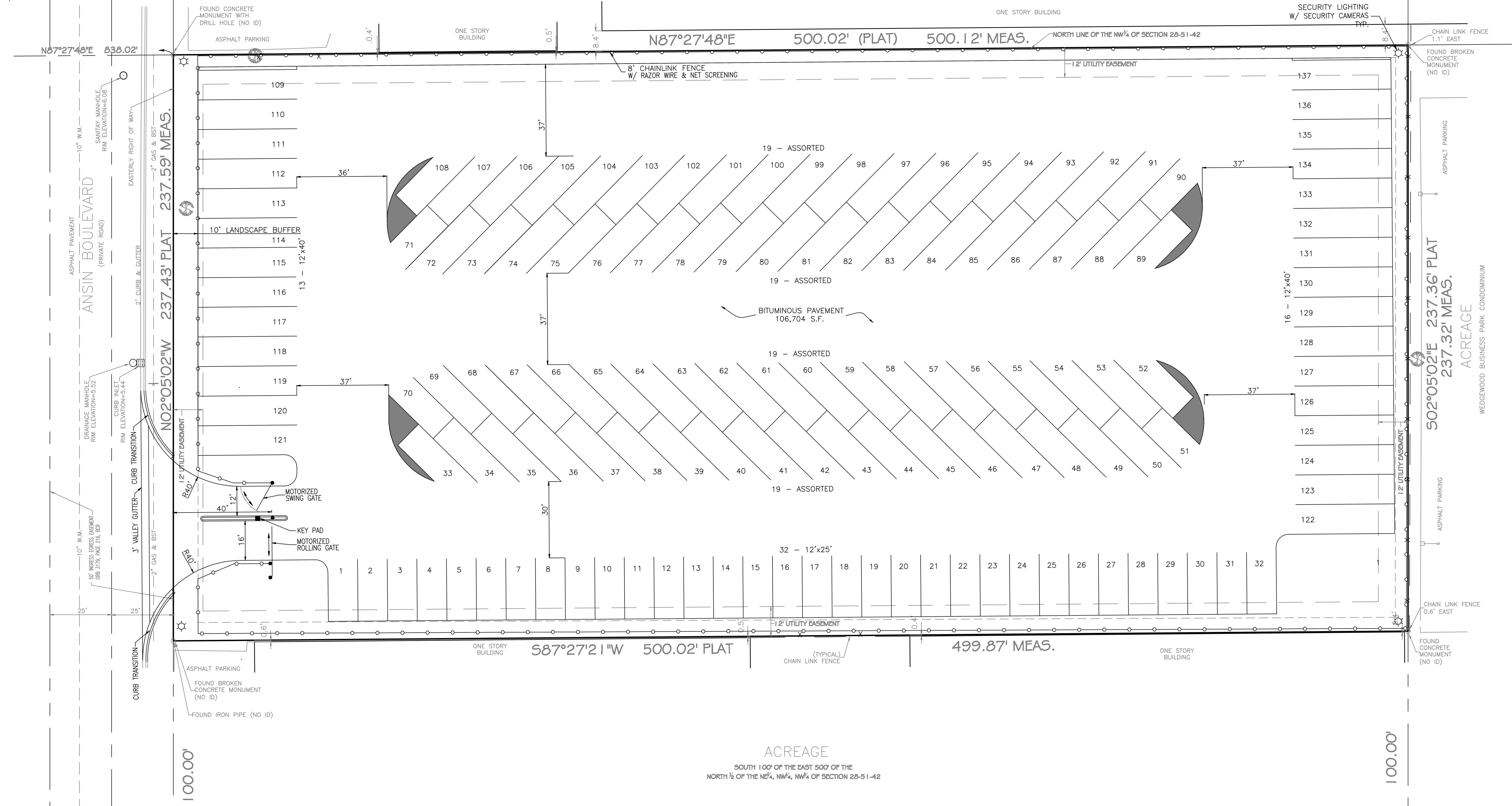


LOT 4, BLOCK 13, SECTION 21-51-42  
 MAP OF HALLANDALE, DADE COUNTY, FLORIDA  
 (PLAT BOOK B, PAGE 13, DADE COUNTY RECORDS)



**Revisions**  
 No./By/Remarks/Approved

CADD File:  
 Field Bk. No. Pg.  
 Project No.

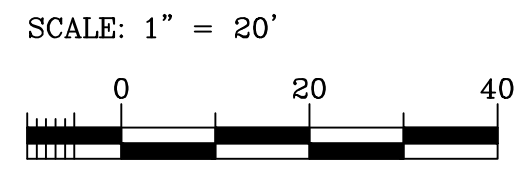
M.R. 5/1/09  
 Drawn by Date  
 R.L. 5/1/09  
 Chk'd by Date  
 Aprv'd by Date



The City of  
**HALLANDALE BEACH**  
 DEPARTMENTS OF PUBLIC WORKS,  
 UTILITIES, AND ENGINEERING

CITY MANAGER  
 MIKE GOOD  
 DIRECTOR OF UTILITIES  
 AND ENGINEERING  
 WILLIAM BRANT, P.E.  
 CITY ENGINEER  
 RICHARD LABINSKY, P.E.

**ANSIN BOULEVARD  
 PARKING  
 FACILITY  
 LOT LAYOUT**



Index  
 File No.  
 Sheet No. 4 of 7

**PARKING TOTALS**

NUMBERS 1-32 (INCLUDING 33, 51, 52, 70, 71, 89, 90, 108) 12' X 25'  
 NUMBERS 34-107 (EXCLUDING 33, 51, 52, 70, 71, 89, 90, 108) 12' X 30'  
 NUMBERS 109-137 12' X 40'

CITY ENGINEER  
 RICHARD LABINSKY, P.E.

P.E. LICENSE #34866